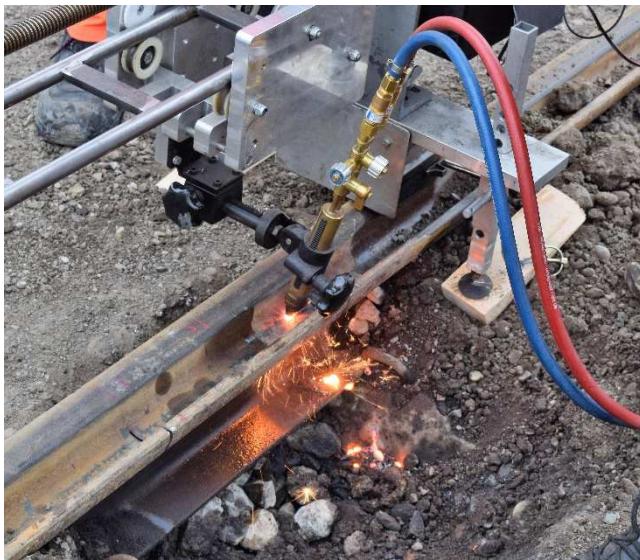


## Flame cutting for removal of groove

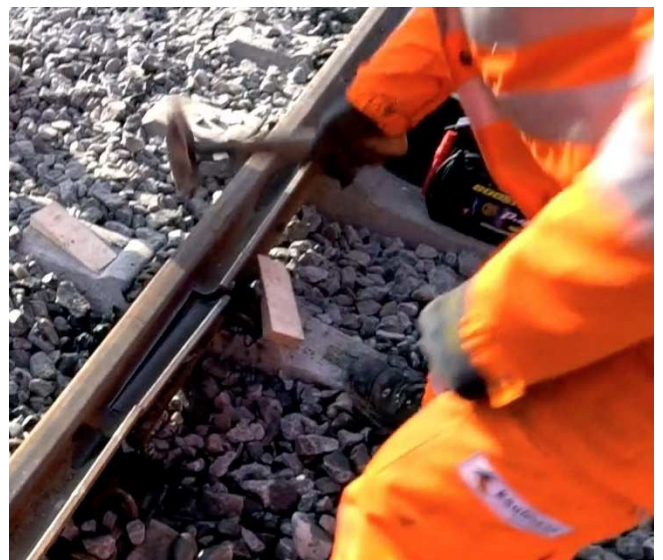
If you want to install axle counters at groove rails, first the groove must be cut off.

Until now this work was done by a big cutting-off wheel in a very energy-sapping and time-consuming way.

Nowadays KAGO AG has adopted the much more efficient process of flame cutting for cutting off the groove. This saves a lot of time and money. Just ask for an offer!



Flame cutting process to cut off the groove.



The separated groove will be knocked out with a hammer.



Installed box at separated groove, still without an axle counter.



Axle counter on holding bracket.