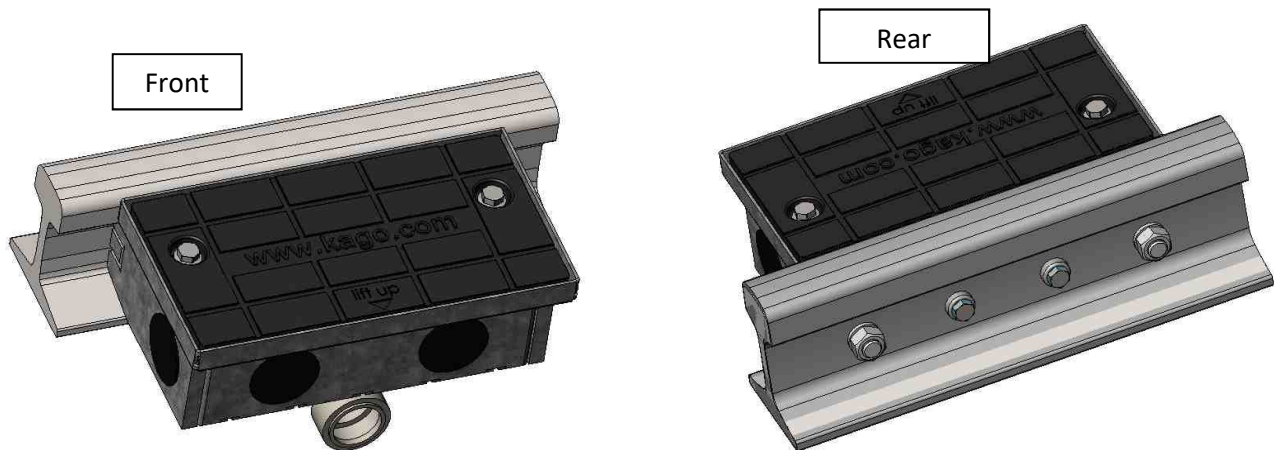


KAGO Rail Attachment Box (GAKSu)



The KAGO Rail Attachment Box is form-closed to the rail and trafficable until 60 tons. It is self-supporting, this means the maximum carrying capacity is also guaranteed when used in lawn trace or other unfortified ground. The cable can be inserted from three sides and from underneath. Easy installation because of generous space inside the box. Cover screw connection with sliding blocks, i.e. replaceable when worn.

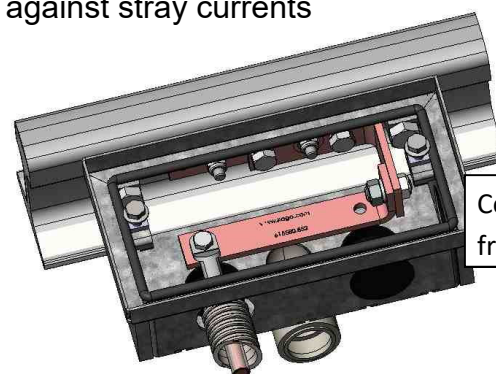
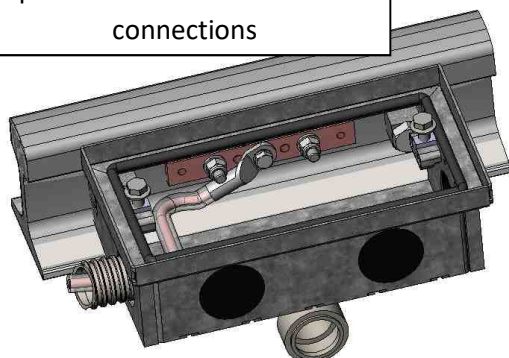
A separate box is available for each type of rail and each position (outer side, wheel flange side).

External dimensions (LxWxH): 386mm x 206mm x ca. 132mm (height according to rail type)

Possible variations:

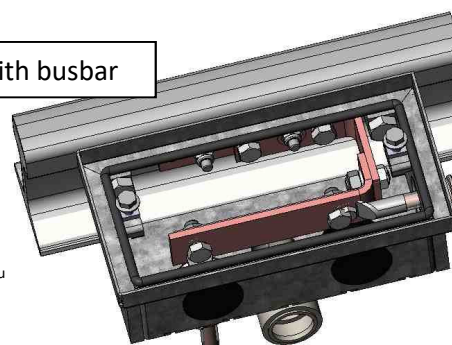
- with or without copper busbar for large cross-sections or stiff cables
- with or without electrically isolated coating against stray currents
- with or without drainage connection 90°

Without busbar, but with base plate for 3xM10 and 2xM12 connections



Connection from the front

with busbar



Connection from below or from the side