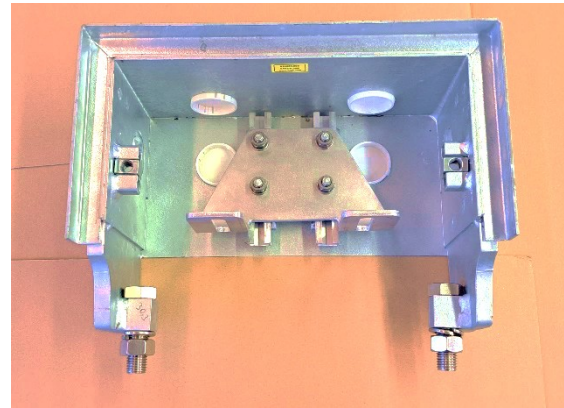


KAGO Rail Attachment Box Type GAKS-R

for rail sensors and rail contacts



With rail attachment boxes type GAKS-R the problem of installation of rail sensors on lines with covered tracks is solved: No interference with the magnetic field!

| | |
|--|--|
| Material (box): | Steel, weldings according to ISO 9692-1, ISO 5817 (D) and ISO 17637 |
| Surface (box): | Hot-dip galvanized according to ISO 8501-1:2017 and ISO 1461:2009 |
| Material (cover): | Glass-fiber reinforced plastics (GRP), non-slip. |
| Fire safety (cover): | European fire protection certificate according to EN 45545-2, sets of requirements R22, R23, hazard levels HL1-3; American fire protection standard according to UL-94, level FV0 (self-extinguishing). |
| External dimensions GAKS-R: | 386mm x 206mm* x ca. 132mm (height according to rail type). |
| | * only cover area |
| Dimensions according to: | EN 14811, RTE 29500 and RTE41000. |
| Suitable for which rails: | For all rails, see questionnaire. |
| Fastening to the rail: | By M20 bolts (INOX A2) and lock nut (INOX A4). Included in delivery. Drill diameter 22mm. |
| Suitable for which axle counters / rail sensor brands: | For all products, see questionnaire. |
| Concreting: | Not necessary, because self-supporting! |
| Weight: | ca. 18 kg. |
| Impermeability: | IP24. |
| CE- conformity: | Not necessary. |

| | |
|----------------------------------|---|
| RoHS and SVHC: | Not necessary. |
| REACH: | Not necessary. |
| Temperature range: | -50°C to +130°C. |
| Trafficability/static load test: | According to EN124, full functionality has been proven until 18 tons weight, i.e. unrestricted access for trucks, lift trucks or rescue vehicles. |
| Maximum deflection of cover: | 10.8 mm (18 tons). |
| Winter practice test: | Yes, trialed in winter at below zero temperatures and with the use of salt. |
| Installing instructions: | Yes. We will be pleased to send you these. |
| References: | Yes. See reference list. |
| Zollnummer (Tares): | 7326.9033. |