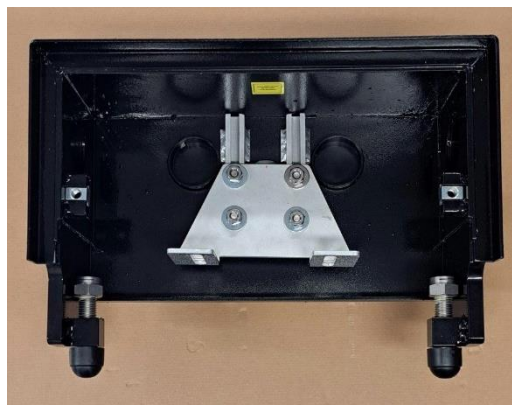
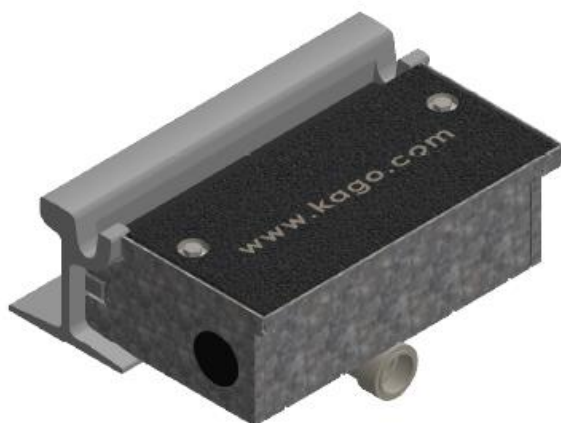


KAGO-Rail Attachment Box Type GAKS-RG **for rail sensors and rail contacts**



With rail attachment boxes type GAKS-RG the problem of installation of rail sensors on lines with covered tracks is solved: No interference with the magnetic field!

Material (box):	Steel, weldings according to ISO 9692-1, ISO 5817 (D) and ISO 17637
Surface (box):	Hot-dip galvanized according to ISO 8501-1:2017 and ISO 1461:2009
Material (cover):	Glass-fiber reinforced plastics (GRP), non-slip.
Fire safety (cover):	European fire protection certificate according to EN 45545-2, sets of requirements R22, R23, hazard levels HL1-3; American fire protection standard according to UL-94, level FV0 (self-extinguishing).
External dimensions GAKS-RG:	472mm x 330mm* x ca. 132mm (height according to rail type).
	* only cover area
Dimensions according to:	EN 14811, RTE 29500 and RTE41000.
Suitable for which rails:	For all rails, see questionnaire.
Fastening to the rail:	By M20 bolts (INOX A2) and lock nut (INOX A4). Included in delivery. Drill diameter 22mm.
Suitable for which axle counters / rail sensor brands:	For all products, see questionnaire.
Concreting:	Not necessary, because self-supporting!
Weight:	ca. 27 kg.
Impermeability:	IP24.
CE- conformity:	Not necessary.

RoHS and SVHC:	Not necessary.
REACH:	Not necessary.
Temperature range:	-50°C to +130°C.
Trafficability/static load test:	According to EN124, full functionality has been proven until 18 tons weight, i.e. unrestricted access for trucks, lift trucks or rescue vehicles.
Maximum deflection of cover:	20.2 mm (18 tons).
Winter practice test:	Yes, trialed in winter at below zero temperatures and with the use of salt.
Installation instructions:	Yes. We will be pleased to send you these.
References:	Yes. See reference list.
Zollnummer (Tares):	7326.9033.